

CONE ASSEMBLY AND MOUNTING INSTRUCTIONS

IN THE CARTON, YOU WILL FIND FOUR CONE PANELS, FOUR CONE GUSSETS AND A BAG OF HARDWARE.

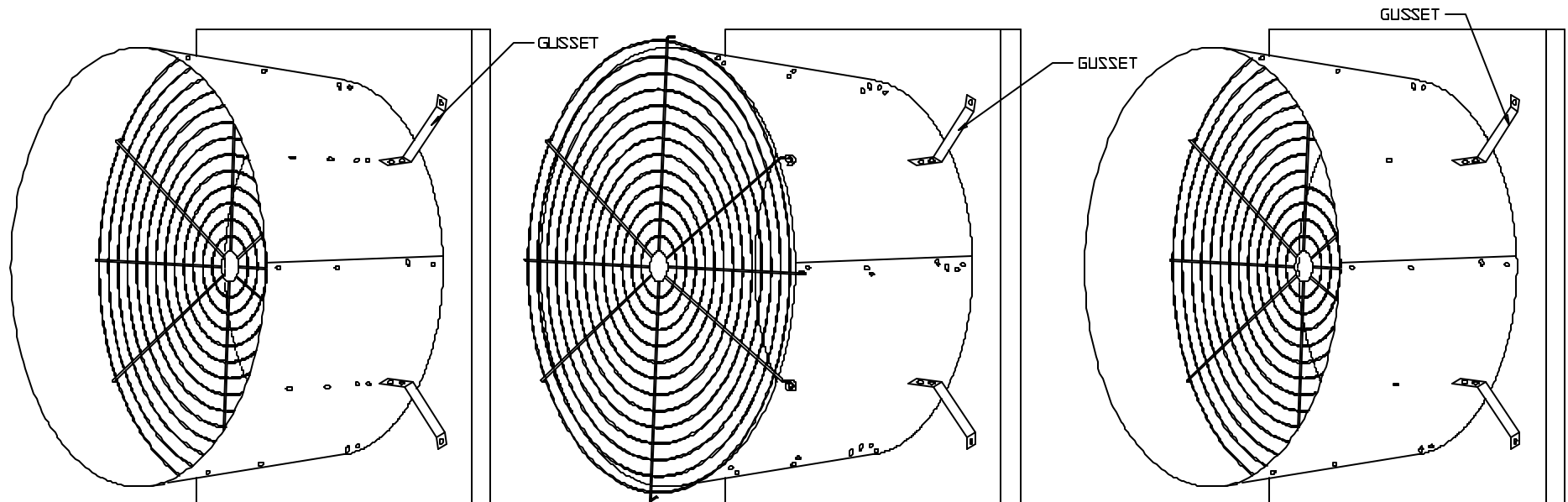
TO ASSEMBLE THE CONE, PLACE TWO OF THE PANELS WITH THE WIDE ENDS DOWN SO THAT THE EDGES OF THE PANELS OVERLAP AND THE THREE HOLES ON THE EDGE OF EACH PANEL LINE UP. NOTE: ON THE 48" CONE THERE ARE TWO SETS OF MOUNTING HOLES ON THE EDGE. THE INNER SET OF HOLES IS FOR THE OLD STYLE NCF48 AND NEF48 FANS, AND THE OUTER SET OF HOLES IS FOR THE CURRENT STYLE NCFB48, NBR48, AND NEF B48 FANS. FASTEN TWO PANELS TOGETHER USING THE 1/4" BOLTS, LOCK WASHERS AND HEX NUTS PROVIDED. DO NOT TIGHTEN. NOW, ATTACH THE NEXT PANEL. DO NOT ATTACH THE FINAL PANEL UNTIL THE CONE IS SLID OVER THE VENTURI. USING THE SLOT ON THE EDGE OF THE CONE PANEL, YOU MAY HAVE TO PLACE A SCREWDRIVER THROUGH THE SLOTS OF THE CONE PANELS AND PRY TO HELP ALIGN THE MOUNTING HOLES ON THE CONE PANEL EDGES AND FASTEN WITH THE 1/4" BOLTS, LOCK WASHERS AND HEX NUTS PROVIDED. NOW, TIGHTEN ALL FASTENERS.

ATTACH THE FOUR CONE GUSSETS TO THE CONE USING THE 1/4" BOLTS, LOCK WASHERS AND NUTS PROVIDED. NOTE: THE 36 SIZE CONE HAS TWO HOLES AND TWO SLOTS FOR ATTACHING THE GUSSET TO THE CONE. IF YOU ARE MOUNTING THE CONE TO AN OLD STYLE NCF36, THE CONE GUSSET MOUNTS TO THE SET OF HOLES; USE THE SET OF SLOTS IF MOUNTING THE CONE TO A CURRENT NCF36 OR NEF36 FAN.

FASTEN THE CONE GUSSETS TO THE FAN PANEL IN THE PRE-PUNCHED HOLES IN THE FACE OF THE FAN PANEL USING THE 1/4" BOLTS, LOCK WASHERS AND NUTS PROVIDED. NOTE: IF YOU ARE MOUNTING THE CONE TO AN OLD STYLE NCF36 OR OLD STYLE NCF48 OR NEF48, THERE ARE TWO CHOICES TO MOUNT THE GUSSET TO THE FAN PANEL. ONE CHOICE IS TO USE THE SELF-DRILLING SCREWS SUPPLIED, AND THE OTHER CHOICE IS TO PRE-DRILL FOUR 9/32" DIAMETER HOLES, ONE IN EACH CORNER OF THE FAN, AND THEN USE THE ABOVE MENTIONED 1/4" HARDWARE. IF THE CONE IS MOUNTING TO AN NCF36, DRILL THE HOLE 4 1/2" FROM THE SIDES AND TOP/BOTTOM. IF THE CONE IS MOUNTING TO AN NCF48 OR NEF48, DRILL THE HOLE 6 9/16" FROM THE SIDES AND TOP/BOTTOM.

SLIDE THE CONE OUT SO IT SNUGS UP ON THE TAPER, AND TIGHTEN ALL FASTENERS.

PLACE THE GUARD IN THE CONE AND LINE UP THE RINGS AT THE ENDS OF THE GUARD BARS WITH THE HOLES IN THE CONE PANELS. FASTEN THE GUARD TO THE CONE WITH THE 1/4" BOLTS, FLATWASHERS, LOCKWASHERS AND NUTS PROVIDED. NOTE: IF NCF48, THE GUARD RINGS WILL GO ON THE OUTSIDE OF THE CONE.



NCF36, NCF36, NEF36

NCF48, NEF48, NCFB48, NBR48, NEFB48

NCF52, NBR52

1	REVISED AND REDRAWN	SN	9-09-04
NO.	REVISION	BY	DATE
MATERIAL		DO NOT SCALE THIS DRAWING	



DESCRIPTION **INSTRUCTIONS**
CONE ASSEMBLY AND MOUNTING
NCF/NEF/NBR 36, 48, 52

DR. SN	CK.	APP'D.
SCALE NTS	DWG. NO. 401-276	
DATE 9-9-04	SHEET 1 OF 1	