

No mechanical parts are exposed to the weather.

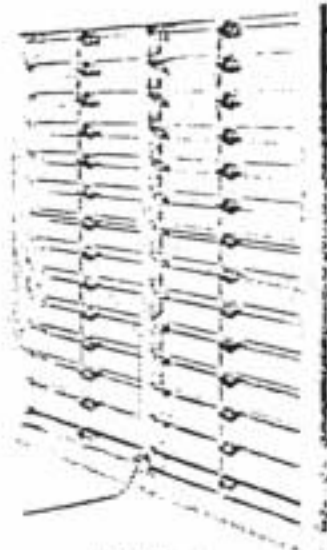
Shutters on air-operated units are gravity closed when fan or blower is not running to prevent entrance of wind, rain, snow, dust and insects, thus prolonging the life of the fan or blower. Blades open instantly when fan or blower starts. On heavy duty units, heavy gauge reinforcing brackets are riveted to both ends of each blade to give added strength, rigidity and alignment to all moving parts in the assembly.

STANDARD FEATURES

- (1) Reinforcing brackets riveted to both ends of each blade on heavy and extra heavy duty units. (See photo inset.)
- (2) Nylon bearings; solid shafts; drawn, cup-type sleeves on all movable linkage.
- (3) Frame of heavy aluminum extrusions with 1/2" channel lock water stop and precision mitered corners.
- (4) Interlocking blades for maximum weather seal.
- (5) Double panel units constructed with rigid "T" section center member.
- (6) Sturdy, extruded, aluminum tie-bar mechanism is connected exactly on centers of blades. Dual tie-bars (one for each section) on double panel units.

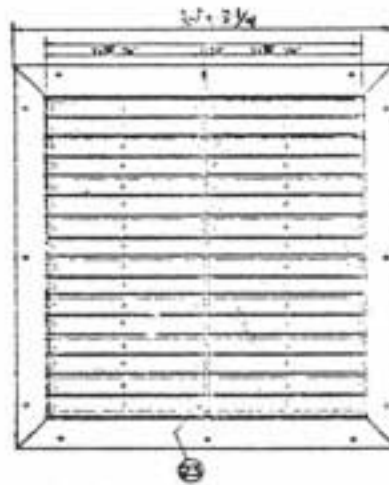
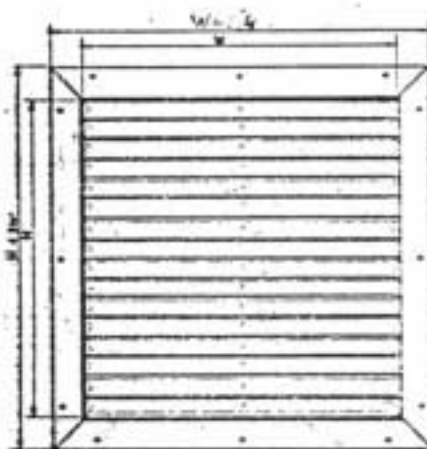
OPTIONAL FEATURES

- Manual, pull-chain operators on models designated (M).
- Electric motor operators (specify voltage, etc.) on models designated (E).



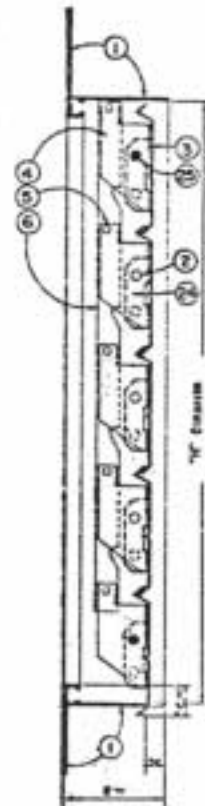
MODEL LRW double panel
back view open

PARTS LIST	
NO.	DESCRIPTION
1	.077 EXTRUDED ALUMINUM FRAME
2	SELF DRIVING RIVET WITH NYLON BUSHING
3	.020 ALUMINUM ROLL-FORMED INTERLOCKING BLADE
4	.063 STAMPED ALUMINUM SHEET CONNECTING BAR BRACKET
5	SHOULDER RIVET WITH NYLON BUSHING
6	1/4" x 1/2" EXTRUDED ALUMINUM TIE BAR
11	CADMIUM PLATED RETURN SPRING
12	PULLEY & PLATE SCREWED TO FRAME
13	MOTOR MOUNTING BRACKET
14	WEST-D-MATIC HIGH TORQUE MOTOR
15	3/4" LD UNION FOR ELECTRICAL CONDUIT
16	LEAD IN WIRE
17	TORQUE SPRING
18	MOTOR ARM
19	LINK OPERATING CHAIN
20	"S" HOOK
23	.077 EXTRUDED ALUMINUM TEE BAR
24	.063 STAMPED ALUMINUM SHEET REINFORCING END BRACKET
25	1/4" DIA. 6061 T-6 ALUMINUM ROD STABILIZER

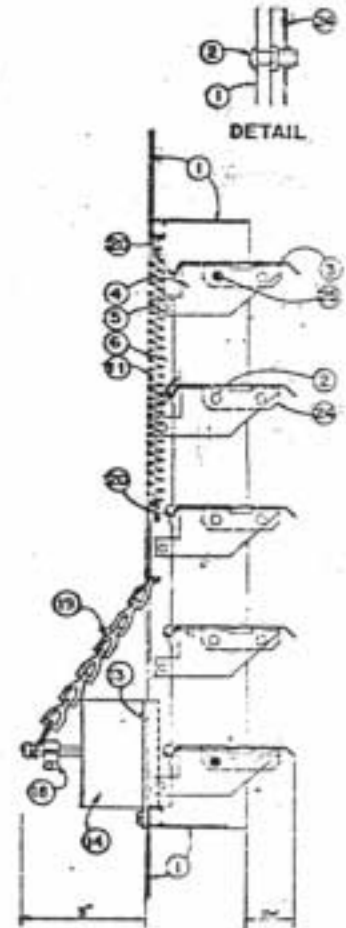


FRONT VIEWS

FAN SIZE	SHUTTER MODEL	NO. OF PANELS	DIMENSIONS	
			I. D.	O. D.
24"	LRW27	SINGLE	27 X 27	30 1/2 x 30 1/2
30"	LRW33	SINGLE	33 X 33	36 1/2 x 36 1/2
36"	LRW39	DOUBLE	39 X 39	42 1/2 x 42 1/2
42"	LRW45	DOUBLE	45 X 45	48 1/2 x 48 1/2
48"	LRW51	DOUBLE	51 X 51	54 1/2 x 54 1/2
54"	LRW57	DOUBLE	57 X 57	60 1/2 x 60 1/2



SECTION
MODEL HD
AIR OPERATED
CLOSED POSITION



SECTION
MODEL HD-E
MOTOR OPERATED
FULLY OPEN POSITION