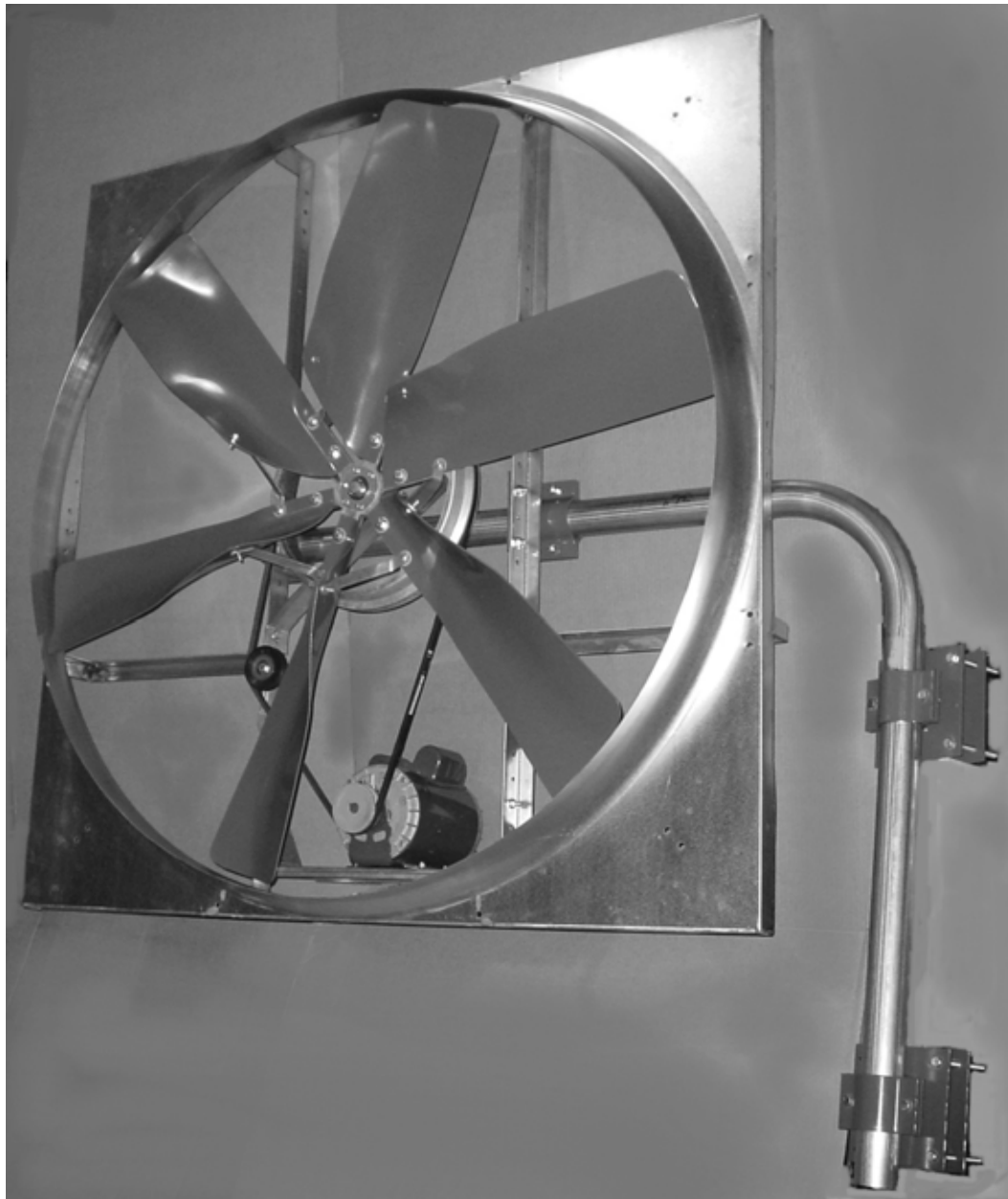


CONTROLLED ENVIRONMENT SYSTEMS FOR FARM BUILDINGS



FAN PIVOT MOUNTING BRACKET

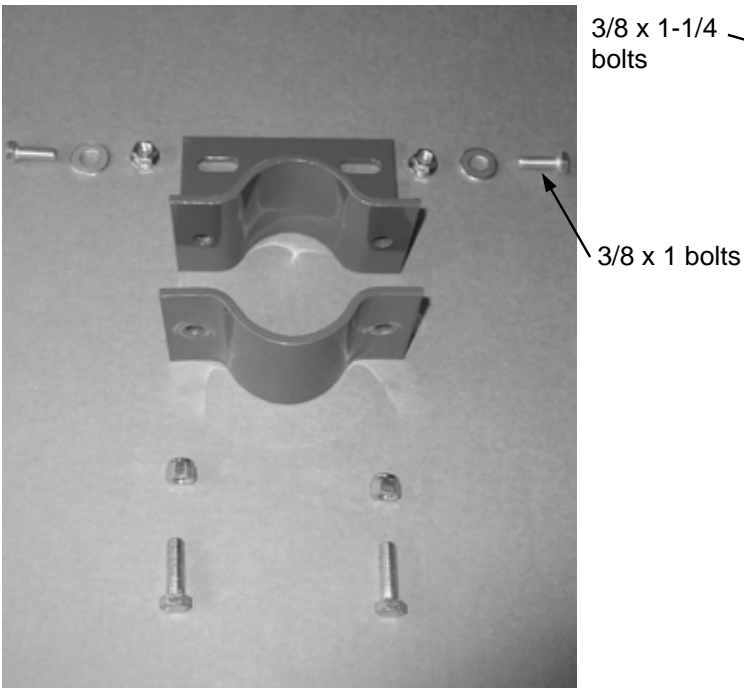
(SHOWN HERE WITH TYPE NCF52 FAN)



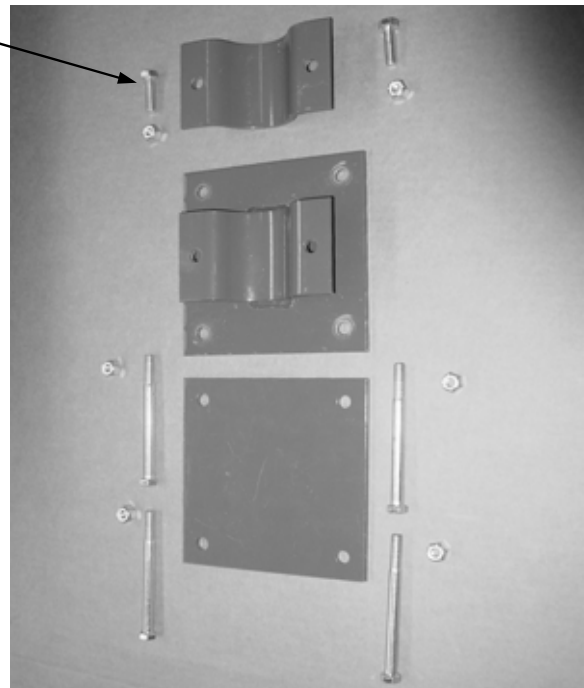
FARM PRODUCTS DIVISION

MEMBER OF AMCA
AMERICAN COOLAIR CORPORATION
P.O. BOX 2300
JACKSONVILLE, FLORIDA 32203
PHONE (904) 389-3646 FAX (904) 387-3449
E-MAIL – agfans@coolair.com
WEBSITE – www.coolair.com

The fan pivot mounting bracket consists of one fan pivot pipe, two upright pivot assemblies, two wall pivot assemblies and the necessary mounting hardware. Note: The 3/8 x 1 bolts are used to attach the upright pivot assemblies to the fan uprights, and the 3/8 x 1-1/4 bolts are used to attach the clamps around the pipe.



Two upright pivot assemblies per fan are attached to the fan uprights.



Two wall pivot assemblies per fan are attached to the building 4 x 4's or other vertical members.



The pivot pipe is slipped through the two upright pivot assemblies. Do not tighten the hardware. Leave the hardware snug for now.



The pivot pipe is slipped through the wall pivot assemblies. Once in place, set the orientation of the fan and tighten all of the nylon insert nuts supplied to secure the unit.

Warning: The fan must be mounted so the fan blades are at least 7 feet from floor or grade level.