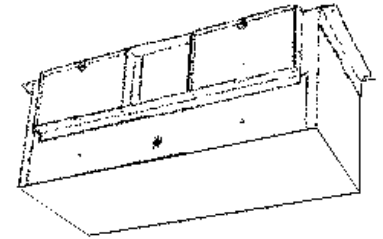




SPECIFICATION SHEET

IN-LINE VENTILATORS

MODEL IL200LA1151 (2000 CFM)
MODEL IL350LA2301 (3500 CFM)



Incredibly reliable. Unbelievably quiet. Offering the CFM choices you need.

FEATURES

BLOWER:

- Low RPM for quiet operation
- Resilient anti-vibration mounts
- Dynamically-balanced, metal, centrifugal blower wheels for quiet, efficient performance
- Permanently lubricated, thermally protected motor
- Plug-in motor rated at 120 VAC (Model IL350LA2301 - 240 VAC)
- Designed for continuous operation

HOUSING:

- Rugged galvanized steel
- May be installed in ceiling or wall (size permitting)
- Acoustic insulation inside
- 8-position mounting brackets for easy installation and greater adaptability to various mounting requirements
- Factory-shipped in horizontal discharge position - may be converted to vertical discharge

ACCESSORIES:

- For Model IL200LA1151:
 - Model G102 Grille Kit for ceiling applications
 - Model D100 Damper Kit with twin backdraft flaps
 - Model V104 Vibration Damper Hangers - 4 per set
- For Model IL350LA2301:
 - Model G103 Grille Kit for ceiling applications
 - Model D101 Damper Kit with twin backdraft flaps
 - Model V104 Vibration Damper Hangers - 4 per set

TYPICAL SPECIFICATION

Ventilator shall have galvanized steel housing lined with acoustic insulation. Housing to have adjustable mounting brackets.

Automatic backdraft dampers to be located within duct connector. Duct connector, blower assembly and wiring plate shall be adjustable for either horizontal or vertical installation.

Blower unit shall be removable from housing and will have a metal, centrifugal-type blower wheels. Motor to be permanently lubricated and mounted with resilient anti-vibration mounts. RPM not to exceed number listed for each model.

Air delivery shall be no less and sound levels no greater than listed for each model. All air and sound ratings shall be certified by AMCA. Units to be UL listed.



"American Coolair Corp. / ILG Industry" certifies that the models shown herein are licensed to bear the AMCA Seal. The ratings shown are based on tests and procedures performed in accordance with AMCA Publication 211 (and AMCA Publication 311 if sound is also certified) and comply with the requirements of the AMCA Certified Ratings Program"



UL listed for use over bathtubs and showers when connected to a GFCI-protected branch circuit.

PERFORMANCE RATINGS – IN-LINE VENTILATORS

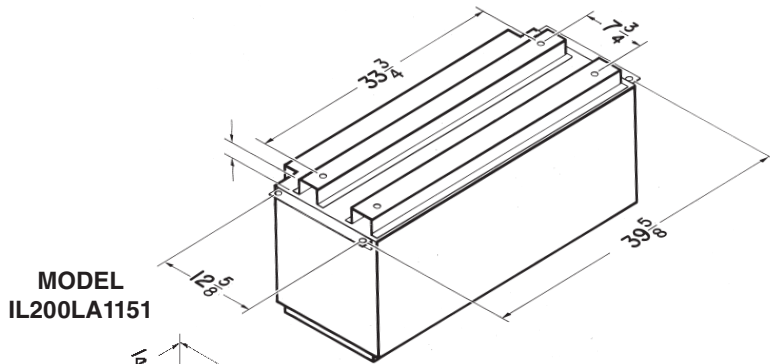
IL200LA1151 & IL350LA2301

AMCA LICENSED PERFORMANCE

CFM / SONES - AT STATIC PRESSURES (Ps - inches of H ₂ O)															
MODEL NO.	NOMINAL VOLTAGE		0.0" Ps	.10" Ps	.125" Ps	.250" Ps	.375" Ps	.50" Ps	.625" Ps	.750" Ps	.875" Ps	1.0" Ps	NOMINAL RPM	AMPS @ 60 Hz	WATTS
IL200LA1151	120 VAC	CFM (S)	1891	1803	1791	1657	1508	1347	1165	808	284		965	5.8	590
		SONES (S)	10.3	9.8	9.4	9.0	8.6	9.1	8.9	7.0	6.7				
		CFM (R)	2070	1931	1898	1769	1609	1424	1314	795	288		1020	5.8	635
		SONES (R)	11.1	10.3	10.1	9.7	9.4	9.2	8.5	7.0	6.7				
IL350LA2301	240 VAC	CFM (S)	3605	3498	3452	3278	3073	2893	2679	2429	2093	1693	1105	5.4	1204
		SONES (S)	15.3	14.8	14.5	14.1	13.1	12.8	12.1	11.8	11.9	10.8			
		CFM (R)	3868	3714	3696	3537	3356	3168	2951	2671	2384	2005	1110	5.4	1205
		SONES (R)	14.6	14.2	14.2	13.3	12.8	12.5	11.6	11.4	11.4	13.4			

(S) = Straight Through; (R) = Right Angle

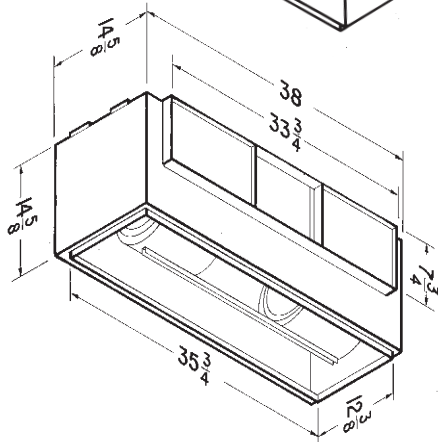
Performance ratings include the effects of backdraft damper in the airstream. Speed (RPM) shown is nominal. Performance is based on actual speed of test. The sound ratings shown are loudness values in fan sones at 5' (1.5m) in a hemispherical free field calculated per AMCA Std. 301. Values shown are for Installation Type D: Ducted inlet, Ducted outlet. Ratings do not include the effect of duct end correction. Performance ratings include the effects of 18 feet of round inlet duct and, if needed, a rectangular to round duct transition in the airstream. Performance shown is for Installation Type D: Ducted inlet, Ducted outlet.



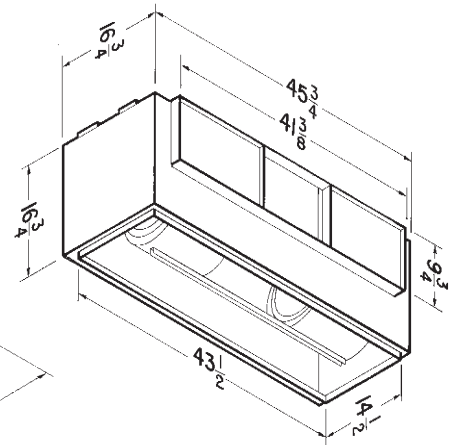
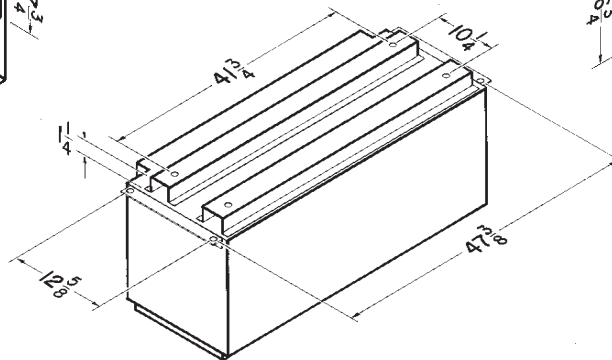
MODEL
IL200LA1151

WEIGHT

MODEL NO.	SHIPPING WT.
IL20LA1151	89.0 lbs.
IL350LA2301	144.0 lbs.



MODEL
IL350LA2301



AMERICAN COOLAIR CORP. / ILG INDUSTRY
3604 MAYFLOWER ST.
JACKSONVILLE, FLORIDA 32205
TEL: 904-389-3646



"American Coolair Corp. / ILG Industry" certifies that the models shown herein are licensed to bear the AMCA Seal. The ratings shown are based on tests and procedures performed in accordance with AMCA Publication 211 (and AMCA Publication 311 if sound is also certified) and comply with the requirements of the AMCA Certified Ratings Program"



UL listed for use over bathtubs and showers when connected to a GFCI-protected branch circuit.