



DIVISION

AMERICAN COOLAIR
CORPORATION

EXPRESS STOCK PROGRAM

48 HOUR IN-STOCK SHIPMENT GUARANTEE





DIVISION
AMERICAN COOLAIR
CORPORATION



Units listed in American Coolair’s Express Stock Program are usually available for shipment within two business days.

Specify Single (1.5 HP and below) or Three Phase (all HP’s) motor when ordering.

Motors and pulleys for belt driven units, and any accessories are shipped separately for field assembly and installation.

Contact American Coolair Corporation to verify inventory & place an order.

904-389-3646

Sales 904-389-0371 | Fax 904-387-3449

info@coolair.com

www.AmericanCoolair.com

 /AmericanCoolair

 /AmericanCoolair

 /Company/American-Coolair-Corp

Table of Contents

- UBCA | Belt Driven Upblast
 - Features & Accessories.....3
 - Performance Data & Dimensions.....4
- CRBA | Belt Driven Downblast
 - Features & Accessories.....5
 - Performance Data & Dimensions.....6
- CRDA | Direct Drive Downblast
 - Features & Accessories.....7
 - Performance Data & Dimensions.....8
- CUDA | Direct Drive Upblast
 - Features & Accessories.....9
 - Performance Data & Dimensions...10
- CWDA | Direct Drive Wall Fan
 - Features & Accessories.....11
 - Performance Data & Dimensions...12
- Pre-Installation Check & Assembly...13-15

Standard Features

- Weather-resistant aluminum motor compartment cover removes easily for access to motor and drives
- Out-of-airstream open motors are isolated for protection from exhaust airstream
- Aluminum centrifugal wheel is a non-overloading, backward inclined design with state-of-the-art computerized balancing
- Overlapping wheel and deep-spun venturi minimize noise and air turbulence, increasing efficiency
- Wheel balance weights are permanently affixed to ensure vibration-free operation
- Wheel backplate fins cool the motor compartment, extending motor life
- Welded-in drain prevents leakage while removing grease and water from fan housing
- Licensed Performance Ratings
- UL Listed for Standard 762

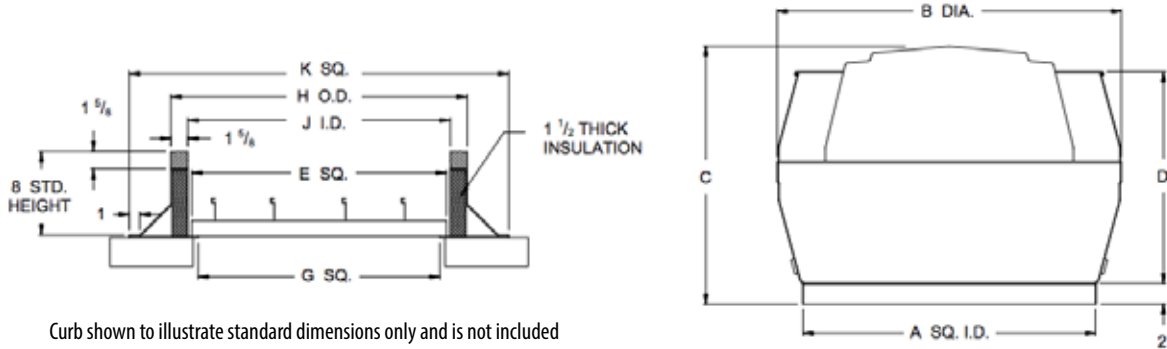
Available Accessories

- Loose Disconnect Device
- Grease Collection Trough
- Backdraft Damper
- Hinge Kit



BELT DRIVEN UPBLAST CENTRIFUGAL POWER ROOF VENTILATORS

Dimensions



Curb shown to illustrate standard dimensions only and is not included

| Unit Size | A | B | C | D | E | G | H | J | K |
|-----------|----|--------|--------|--------|--------|--------|--------|--------|--------|
| 12 - 15 | 26 | 29 3/8 | 24 1/2 | 19 1/4 | 20 3/4 | 19 1/4 | 24 1/2 | 21 1/4 | 32 1/2 |
| 16, 18 | 30 | 35 3/8 | 26 1/2 | 22 5/8 | 24 3/4 | 23 1/4 | 28 1/2 | 25 1/4 | 36 1/2 |
| 20 | 34 | 43 3/8 | 29 7/8 | 25 1/2 | 28 3/4 | 27 1/4 | 32 1/2 | 29 1/4 | 40 1/2 |

Dimensions in Inches

Performance Data

| Model** | Curb Cap I.D. (in.) | Motor HP | Motor Pulley Turns Open* | RPM (Min/Max) | Cubic Feet per Minute (CFM) @ Static Pressure (in. H2O) | | | | | | Max BHP | Max Sones | |
|-----------|---------------------|----------|--------------------------|---------------|---|-------|-------|-------|-------|-------|---------|-----------|------|
| | | | | | 0.00 | .250 | .500 | .750 | 1.00 | 1.50 | | | 2.00 |
| UBCA12-3H | 26 | 1/3 | 4.5 | 1,119 | 1,275 | 1,086 | 867 | | | | | 0.14 | 7.4 |
| | | | 1.0 | 1,585 | 1,806 | 1,669 | 1,539 | 1,396 | 1,230 | | | | 0.39 |
| UBCA12-3K | 26 | 3/4 | 4.5 | 1,585 | 1,806 | 1,669 | 1,539 | 1,396 | 1,230 | | | 0.39 | 15.0 |
| | | | 1.0 | 2,051 | 2,338 | 2,228 | 2,127 | 2,028 | 1,922 | 1,687 | 1,368 | 0.84 | 23 |
| UBCA13-3H | 26 | 1/3 | 3.5 | 1,119 | 1,617 | 1,429 | 1,239 | 953 | | | | 0.20 | 8.9 |
| | | | 1.0 | 1,352 | 1,954 | 1,801 | 1,641 | 1,482 | 1,264 | | | | 0.36 |
| UBCA13-3K | 26 | 3/4 | 4.5 | 1,352 | 1,954 | 1,801 | 1,641 | 1,482 | 1,264 | | | 0.36 | 13.7 |
| | | | 1.0 | 1,772 | 2,561 | 2,442 | 2,327 | 2,202 | 2,086 | 1,811 | | | 0.81 |
| UBCA15-3J | 26 | 1/2 | 3.5 | 1,119 | 2,188 | 1,967 | 1,722 | 1,395 | | | | 0.33 | 10.1 |
| | | | 2.0 | 1,259 | 2,462 | 2,288 | 2,045 | 1,804 | 1,512 | | | | 0.48 |
| UBCA15-3L | 26 | 1 | 4.5 | 1,305 | 2,552 | 2,388 | 2,147 | 1,937 | 1,649 | | | 0.53 | 13.4 |
| | | | 2.0 | 1,678 | 3,281 | 3,166 | 3,004 | 2,806 | 2,662 | 2,252 | 1,790 | 1.13 | 22 |
| UBCA16-3K | 30 | 3/4 | 4.5 | 918 | 2,628 | 2,281 | 2,009 | 1,407 | | | | 0.34 | 10.3 |
| | | | 1.0 | 1,248 | 3,573 | 3,287 | 3,073 | 2,887 | 2,651 | 1,537 | | | 0.85 |
| UBCA16-3M | 30 | 1 1/2 | 4.5 | 1,248 | 3,573 | 3,287 | 3,073 | 2,887 | 2,651 | 1,537 | | 0.85 | 18.0 |
| | | | 2.0 | 1,564 | 4,478 | 4,241 | 4,036 | 3,872 | 3,727 | 3,384 | 2,780 | 1.67 | 27 |
| UBCA18-3L | 30 | 1 | 4.5 | 918 | 3,344 | 2,924 | 2,568 | 2,061 | | | | 0.48 | 10.6 |
| | | | 1.5 | 1,211 | 4,412 | 4,109 | 3,792 | 3,524 | 3,246 | 2,181 | | | 1.10 |
| UBCA18-3N | 30 | 2 | 4.5 | 1,266 | 4,612 | 4,331 | 4,009 | 3,762 | 3,490 | 2,662 | | 1.26 | 19.7 |
| | | | 2.5 | 1,527 | 5,563 | 5,351 | 5,054 | 4,817 | 4,618 | 4,171 | 3,574 | 2.22 | 27 |
| UBCA20-3L | 34 | 1 | 4.5 | 771 | 3,857 | 3,383 | 2,931 | 2,092 | | | | 0.47 | 10.8 |
| | | | 1.5 | 1,028 | 5,143 | 4,785 | 4,443 | 4,149 | 3,653 | | | | 1.11 |
| UBCA20-3N | 34 | 2 | 4.5 | 1,028 | 5,143 | 4,785 | 4,443 | 4,149 | 3,653 | | | 1.11 | 17.8 |
| | | | 2.5 | 1,303 | 6,519 | 6,243 | 5,950 | 5,682 | 5,454 | 4,823 | 3,914 | 2.27 | 26 |

* Number of turns open from the closed position to match the fan RPM listed

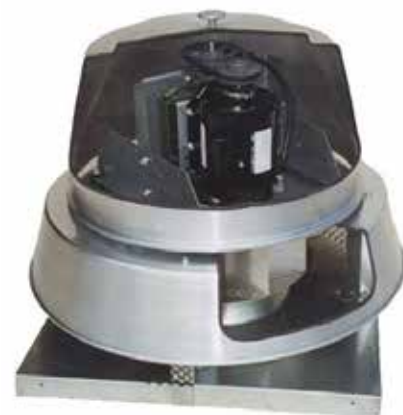
**Motors, pulleys, and any accessories are shipped separately for field assembly and installation.

Standard Features

- Weather-resistant aluminum motor compartment cover removes easily for access to motor and drives
- Out-of-airstream open motors are isolated for protection from exhaust airstream
- Aluminum centrifugal wheel is a non-overloading, backward inclined design with state-of-the-art computerized balancing
- Overlapping wheel and deep-spun venturi minimize noise and air turbulence, increasing efficiency
- Wheel balance weights are permanently affixed to ensure vibration-free operation
- Wheel backplate fins cool the motor compartment, extending motor life
- Birdscreen is 1/2" galvanized mesh
- Licensed Performance Ratings
- UL Listed for Standard 705

Available Accessories

- Loose Disconnect Device
- Backdraft Damper

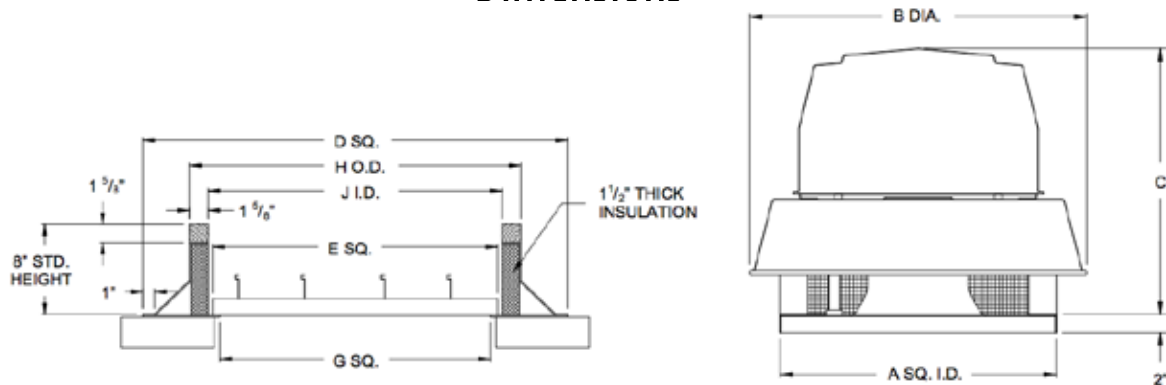


CRBA

BELT DRIVEN DOWNBLAST CENTRIFUGAL POWER ROOF VENTILATORS



Dimensions



Curb shown to illustrate standard dimensions only and is not included

| Unit Size | A | B | C | D | E | G | H | J |
|-----------|----|--------|--------|--------|--------|--------|--------|--------|
| 06, 10 | 18 | 23 1/8 | 20 1/2 | 24 1/2 | 12 3/4 | 11 1/4 | 16 1/2 | 13 1/4 |
| 12, 15 | 23 | 28 5/8 | 22 1/2 | 29 1/2 | 17 3/4 | 16 1/4 | 21 1/2 | 18 1/4 |
| 18 | 30 | 35 1/2 | 24 5/8 | 36 1/2 | 24 3/4 | 23 1/4 | 28 1/2 | 25 1/4 |

Dimensions in Inches

Performance Data

| Model** | Curb Cap I.D. (in.) | Motor HP | Motor Pulley Turns Open* | RPM (Min/Max) | Cubic Feet per Minute (CFM) @ Static Pressure (in. H ₂ O) | | | | | | Max BHP | Max Sones | |
|------------|---------------------|----------|--------------------------|---------------|--|-------|-------|-------|-------|-------|---------|-----------|------|
| | | | | | 0.00 | .125 | .250 | .500 | .750 | 1.00 | | | 1.50 |
| CRBA06-1GL | 18 | 1/4 | 4.0 | 1,135 | 374 | 325 | 263 | | | | | 0.03 | 4.9 |
| | | | 1.0 | 1,789 | 589 | 555 | 526 | 455 | 366 | | | 0.12 | 13.4 |
| CRBA06-1GH | 18 | 1/4 | 4.0 | 1,933 | 637 | 604 | 577 | 516 | 441 | 345 | | 0.15 | 15.5 |
| | | | 2.5 | 2,219 | 731 | 702 | 677 | 631 | 569 | 503 | | 0.22 | 20 |
| CRBA10-1GL | 18 | 1/4 | 4.0 | 1,135 | 653 | 579 | 497 | | | | | 0.04 | 5.2 |
| | | | 1.0 | 1,789 | 1,030 | 982 | 935 | 839 | 719 | 540 | | 0.18 | 13.0 |
| CRBA10-1GH | 18 | 1/4 | 4.0 | 1,933 | 1,113 | 1,068 | 1,024 | 940 | 836 | 709 | | 0.22 | 15.2 |
| | | | 2.5 | 2,219 | 1,278 | 1,238 | 1,200 | 1,126 | 1,047 | 955 | 703 | 0.34 | 19.8 |
| CRBA12-1G | 23 | 1/4 | 4.5 | 886 | 1,002 | 900 | 791 | | | | | 0.07 | 4.7 |
| | | | 2.0 | 1,259 | 1,424 | 1,354 | 1,281 | 1,127 | 922 | | | 0.19 | 9.8 |
| CRBA12-1H | 23 | 1/3 | 4.5 | 1,119 | 1,266 | 1,186 | 1,105 | 914 | | | | 0.14 | 7.6 |
| | | | 1.0 | 1,585 | 1,793 | 1,738 | 1,680 | 1,566 | 1,443 | 1,297 | | 0.39 | 15.3 |
| CRBA12-1K | 23 | 3/4 | 4.5 | 1,585 | 1,793 | 1,738 | 1,680 | 1,566 | 1,443 | 1,297 | | 0.39 | 15.3 |
| | | | 1.5 | 2,005 | 2,268 | 2,225 | 2,180 | 2,089 | 1,999 | 1,909 | 1,688 | 0.79 | 23 |
| CRBA15-1H | 23 | 1/3 | 4.5 | 886 | 1,754 | 1,687 | 1,578 | 1,328 | | | | 0.20 | 7.4 |
| | | | 3.5 | 1,119 | 2,215 | 2,173 | 2,095 | 1,906 | 1,737 | | | 0.40 | 12.4 |
| CRBA15-1K | 23 | 3/4 | 4.5 | 1,119 | 2,215 | 2,173 | 2,095 | 1,906 | 1,737 | | | 0.40 | 12.4 |
| | | | 3.5 | 1,352 | 2,676 | 2,645 | 2,597 | 2,455 | 2,289 | 2,166 | | 0.71 | 17.9 |
| CRBA15-1L | 23 | 1 | 4.5 | 1,305 | 2,583 | 2,550 | 2,497 | 2,349 | 2,179 | 2,044 | | 0.83 | 16.9 |
| | | | 2.5 | 1,632 | 3,230 | 3,205 | 3,174 | 3,071 | 2,953 | 2,819 | 2,594 | 1.57 | 26 |
| CRBA18-1J | 30 | 1/2 | 4.5 | 735 | 2,754 | 2,627 | 2,440 | 1,974 | | | | 0.46 | 8.9 |
| | | | 3.0 | 918 | 3,444 | 3,360 | 3,213 | 2,923 | 2,531 | 1,886 | | 1.09 | 16.6 |
| CRBA18-1L | 30 | 1 | 4.5 | 881 | 3,305 | 3,216 | 3,058 | 2,753 | 2,308 | | | 0.50 | 12.3 |
| | | | 2.0 | 1,174 | 4,405 | 4,344 | 4,264 | 4,025 | 3,805 | 3,547 | 2,766 | 1.17 | 21 |
| CRBA18-1N | 30 | 2 | 4.5 | 1,266 | 4,750 | 4,694 | 4,626 | 4,409 | 4,204 | 3,987 | 3,388 | 1.47 | 23 |
| | | | 3.5 | 1,452 | 5,448 | 5,401 | 5,346 | 5,187 | 4,988 | 4,812 | 4,415 | 2.22 | 28 |

* Number of turns open from the closed position to match the fan RPM listed

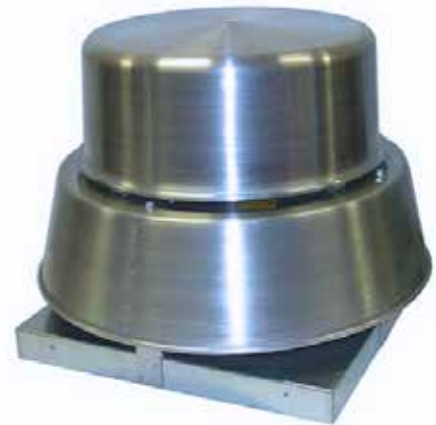
**Motors, pulleys, and any accessories are shipped separately for field assembly and installation.

Standard Features

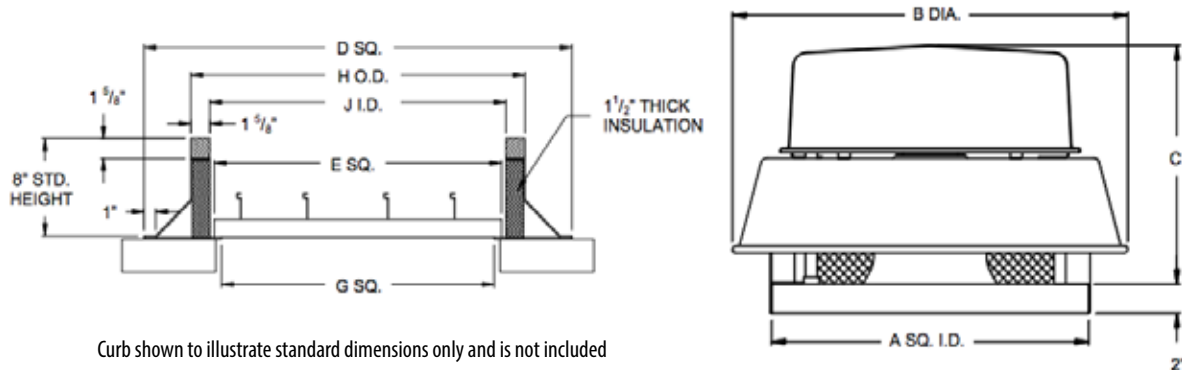
- Weather-resistant aluminum motor compartment cover removes easily for access to motor and drives
- Out-of-airstream open motors are isolated for protection from exhaust airstream
- Aluminum centrifugal wheel is a non-overloading, backward inclined design with state-of-the-art computerized balancing
- Overlapping wheel and deep-spun venturi minimize noise and air turbulence, increasing efficiency
- Wheel balance weights are permanently affixed to ensure vibration-free operation
- Wheel backplate fins cool the motor compartment, extending motor life
- Birdscreen is 1/2" galvanized mesh
- Safety Disconnect Device
- Licensed Performance Ratings
- UL Listed for Standard 705

Available Accessories

- Backdraft Damper
- 115v Speed Controller



Dimensions



Curb shown to illustrate standard dimensions only and is not included

| Unit Size | A | B | C | D | E | G | H | J |
|-----------|----|--------|--------|--------|--------|--------|--------|--------|
| 6, 10 | 18 | 23 1/8 | 12 | 24 1/2 | 12 3/4 | 11 1/4 | 16 1/2 | 13 1/4 |
| 12 - 15 | 23 | 28 5/8 | 16 1/2 | 29 1/2 | 17 3/4 | 16 1/4 | 21 1/2 | 18 1/4 |

Dimensions in Inches

Performance Data

| Model | Curb Cap I.D. (in.) | Motor HP | RPM** (Min/Max) | Cubic Feet per Minute (CFM) @ Static Pressure (in. H ₂ O) | | | | | | | Max BHP | Max Sones | |
|----------------|---------------------|----------|-----------------|--|-------|-------|-------|-------|-------|-------|---------|-----------|-----|
| | | | | 0.00 | .125 | .250 | 0.375 | .500 | .625 | .750 | | | |
| CRDA06E16D1151 | 18 | 1/10 | 800 | 266 | 187 | | | | | | | 0.010 | 1.5 |
| | | | 1,650 | 548 | 512 | 481 | 442 | 398 | 348 | 283 | 0.090 | 11.5 | |
| CRDA10E15D1151 | 18 | 1/10 | 800 | 460 | 350 | | | | | | | 0.016 | 3.5 |
| | | | 1,550 | 891 | 836 | 784 | 727 | 661 | 586 | 474 | 0.115 | 11.9 | |
| CRDA12E10D1151 | 23 | 1/8 | 550 | 623 | 442 | | | | | | | 0.016 | 1.3 |
| | | | 1,025 | 1,161 | 1,074 | 984 | 879 | 747 | | | 0.105 | 6.4 | |
| CRDA13F11D1151 | 23 | 1/5 | 550 | 833 | 635 | | | | | | | 0.025 | 2.0 |
| | | | 1,125 | 1,704 | 1,622 | 1,527 | 1,426 | 1,319 | 1,199 | 1,057 | 0.215 | 9.8 | |
| CRDA15H11D1151 | 23 | 1/3 | 550 | 1,089 | 930 | | | | | | | 0.043 | 2.4 |
| | | | 1,100 | 2,177 | 2,134 | 2,053 | 1,966 | 1,860 | 1,785 | 1,677 | 0.379 | 11.9 | |

**Without optional Speed Controller, fan will run at Max RPM as shown. With optional Speed Controller, fan speed can be set to run at any speed between the listed Min and Max RPM.

CUDA

DIRECT DRIVE UPBLAST CENTRIFUGAL POWER ROOF VENTILATORS



Standard Features

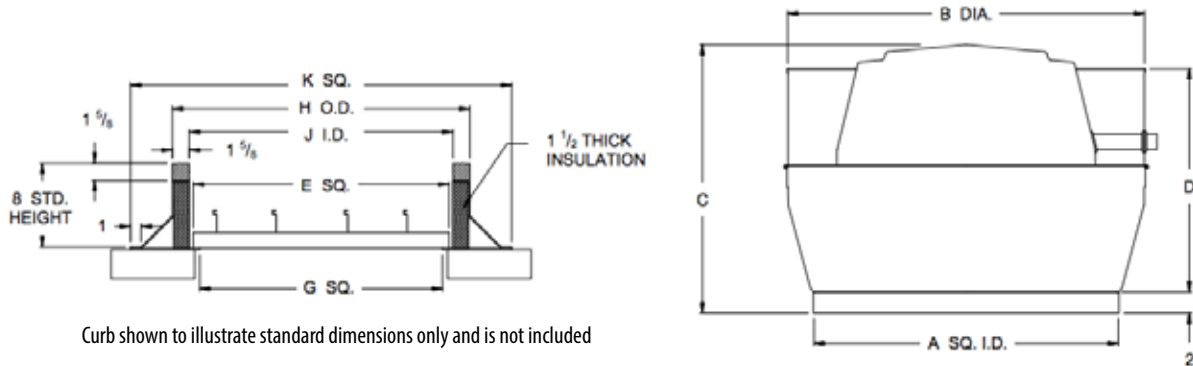
- Safety disconnect device
- Direct drive assembly reduces maintenance and operating costs
- Line bore hub eliminates the need for a bushing and has wheel puller provisions
- Weather-resistant, spun aluminum motor compartment cover removes easily for access to motor and drive
- Open motors are located out of the airstream
- Overlapping wheel and deep-spun venturi minimize noise and air turbulence, increasing efficiency
- Aluminum centrifugal wheel is a non-overloading, backward inclined design with state-of-the-art computerized balancing
- Permanently affixed wheel balance weights ensure vibration free operation
- Welded-in drain prevents leakage while removing grease and water from fan housing
- Wheel backplate fins cool the motor compartment, extending motor life
- Licensed Performance Ratings
- UL Listed for Standard 705.

Available Accessories

- Backdraft Dampers
- Hinged base kits
- Speed Controller



Dimensions



Curb shown to illustrate standard dimensions only and is not included

| Unit Size | A | B | C | D | E | G | H | J | K |
|-----------|----|--------|--------|--------|--------|--------|--------|--------|--------|
| 10 | 18 | 23 | 14 1/8 | 11 1/8 | 12 3/4 | 11 1/4 | 16 1/2 | 13 1/4 | 24 1/2 |
| 13 | 26 | 29 1/4 | 19 | 22 | 20 3/4 | 19 1/4 | 24 1/2 | 21 1/4 | 32 1/2 |

Dimensions in Inches

Performance Data

| Model | Curb Cap I.D. (in.) | Motor HP | RPM*** (Min/Max) | Cubic Feet per Minute (CFM) @ Static Pressure (in. H2O) | | | | | | | Max BHP | Max Sones |
|----------------|---------------------|----------|------------------|---|-------|-------|-------|-------|-------|-------|---------|-----------|
| | | | | 0.00 | .125 | .250 | 0.375 | .500 | .625 | .750 | | |
| CUDA10C15D1151 | 18 | 1/13 | 800 | 435 | 350 | | | | | | 0.012 | 1.8 |
| | | | 1,500 | 816 | 783 | 737 | 684 | 625 | 542 | 0.081 | 8.9 | |
| CUDA13F11D1151 | 26 | 1/5 | 550 | 763 | 566 | | | | | | 0.023 | 1.9 |
| | | | 1,125 | 1,560 | 1,463 | 1,372 | 1,287 | 1,182 | 1,048 | 888 | 0.198 | 8.3 |

***Without optional Speed Controller, fan will run at Max RPM as shown. With optional Speed Controller, fan speed can be set to run at any speed between the listed Min and Max RPM.

Standard Features

- Weather-resistant aluminum motor compartment cover removes easily for access to motor and drives
- Open motors are located out of the airstream
- Aluminum centrifugal wheel is a non-overloading, backward inclined design with state-of-the-art computerized balancing
- Overlapping wheel and deep-spun venturi minimize noise and air turbulence, increasing efficiency
- Permanently affixed wheel balance weights ensure vibration-free operation
- Wheel backplate fins cool the motor compartment, extending motor life
- Birdscreen is 1/2" x 1/2" galvanized wire mesh
- Safety disconnect device
- Licensed Performance Ratings
- UL Listed for Standard 705

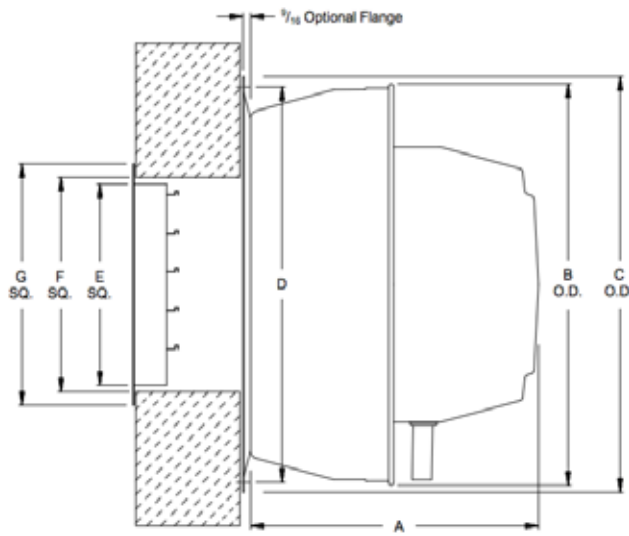
Available Accessories

- Wall Mounting Flange
- Speed Controller
- Backdraft Damper



pictured from bottom to show drain hole

Dimensions



| Unit Size | A | B | C | D | E | F | G |
|-----------|--------|--------|--------|--------|--------|--------|--------|
| 10 | 12 1/8 | 23 3/4 | 25 1/4 | 24 1/8 | 10 1/4 | 10 3/4 | 12 1/2 |
| 13, 15 | 17 1/4 | 29 7/8 | 31 | 29 1/2 | 15 1/4 | 15 3/4 | 17 1/2 |

Dimensions in Inches

Performance Data

| Model | Motor HP | RPM*** (Min/Max) | Cubic Feet per Minute (CFM) @ Static Pressure (in. H ₂ O) | | | | | | | Max BHP | Max Sones |
|----------------|----------|---------------------|--|-------|-------|-------|-------|-------|-------|---------|-----------|
| | | | 0.00 | .125 | .250 | 0.375 | .500 | .625 | .750 | | |
| CWDA10C15D1151 | 1/10 | 800 | 435 | 350 | | | | | | 0.012 | 1.8 |
| | | 1,500 | 816 | 783 | 737 | 684 | 625 | 542 | | 0.081 | 8.9 |
| CWDA13F11D1151 | 1/5 | 550 | 763 | 566 | | | | | | 0.023 | 1.9 |
| | | 1,125 | 1,560 | 1,463 | 1,372 | 1,287 | 1,182 | 1,048 | 888 | 0.198 | 8.3 |
| CWDA15H11D1151 | 1/3 | 550 | 1,019 | 818 | | | | | | 0.039 | 2.7 |
| | | 1,100 | 2,038 | 1,952 | 1,862 | 1,757 | 1,636 | 1,514 | 1,353 | 0.316 | 10.4 |

*** Without optional Speed Controller, fan will run at Max RPM as shown. With optional Speed Controller, fan speed can be set to run at any speed between the listed Min and Max RPM.

PRE-INSTALLATION CHECK & ASSEMBLY

UBCA12 - 20 | CRBA 12 - 18

Before installation of an American Coolair fan, thoroughly check all equipment for shipping damage which may affect operation of the unit. If damage is found, file a claim immediately with delivering carrier. UBCA and CRBA Power Roof Ventilators are shipped as a shell and a powerpack with the motor pulley, fan pulley, motor and belt packaged together. The instructions below detail the assembly of the powerpack. Installation on UBCA units may be made easier by removing the upper outer housing during installation.

- 1** Attach the motor pulley to the motor as shown, ensuring that the pulley is set to the turns open stated on the model specifications page.



- 4** Secure the swivel pin by inserting the hairpin cotter as shown.



- 2** Connect the motor bracket to the motor using the washers and bolts provided and pre-wire the motor for the specified voltage and counter-clockwise rotation.



- 5** Insert the key in the drive shaft keyway and attach the fan pulley, vertically aligning the fan pulley groove with the motor pulley groove that was installed earlier.



- 3** Secure the motor bracket to the swivel bracket by pushing the swivel pin through the swivel and motor bracket holes.



- 6** Thread the belt over the pulleys, and position the motor to tighten the belt. Ideal tension is the lowest at which the belt will not slip under peak load conditions. Run the tensioner bolt to the motor bracket and tighten the locknut to complete assembly.



PRE-INSTALLATION CHECK & ASSEMBLY

CRBA 06 - 10

Before installation of an American Coolair fan, thoroughly check all equipment for shipping damage which may affect operation of the unit. If damage is found, file a claim immediately with delivering carrier. CRBA Power Roof Ventilators are shipped as a shell and a powerpack with the motor pulley, fan pulley, motor and belt packaged together. The instructions below detail the assembly of the powerpack.

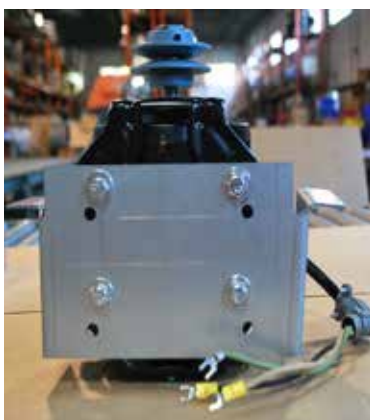
- 1 The unit ships with the motor bracket attached. Remove the motor bracket, hardware kit, and drive shaft key.



- 3 Place the motor bracket assembly between the support rails, loosely assemble using the hardware removed in step 1.



- 2 Mount the motor to the motor bracket using the hardware provided and pre-wire the motor for the specified voltage and counter-clockwise rotation. Attach the motor pulley to the motor as shown, ensuring that the pulley is set to the turns open stated on the model specifications page.



- 4 Insert the key in the fan shaft keyway and attach the fan pulley, vertically aligning the fan pulley groove with the motor pulley groove. Thread the belt onto the pulleys and slide the motor bracket assembly to tension the belt. Ideal tension is the lowest at which the belt will not slip under peak load conditions. Tighten the motor bracket hardware to complete assembly.



PRE-INSTALLATION CHECK

CRDA | CUDA | CWDA

Direct drive models are shipped fully assembled. Follow the pre-installation check instructions before installing the unit.

- 1** Before installation of an American Coolair fan, thoroughly check all equipment for shipping damage which may affect operation of the unit. If damage is found, file a claim immediately with delivering carrier.
- 2** Before connecting the unit to a power source, turn the wheel by hand to ensure that it turns freely without striking anything. Check to make sure that the data on the motor nameplate agrees with the electrical service that is going to be applied, double checking the voltage and phase.
- 3** Check the wiring diagram to make sure that the proper connections are made for the electrical service being applied. Note the directional arrow for correct wheel rotation when power is applied.



P.O. Box 2300 | Jacksonville, FL 32203

Ph 904-389-3646

Fax 904-387-3449 | 904-381-7560

www.americancoolair.com

 /AmericanCoolair

 /AmericanCoolair

 /Company/American-Coolair-Corp

Member AMCA