

Type REBC and REDC

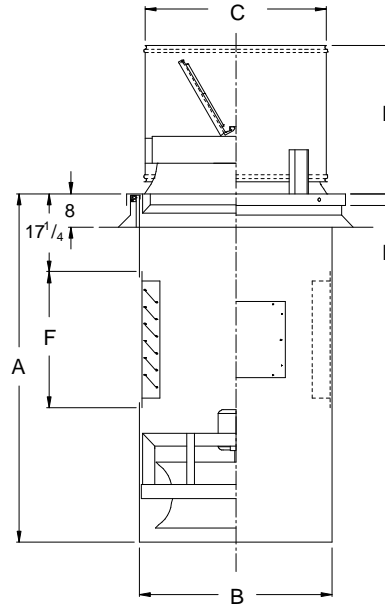
Exhaust or Recirculation, Belt or Direct Drive, Power Roof Ventilator



P.O. Box 2300 Jacksonville, Florida 32203
 Phone: (904) 389-3646
 Fax: (904) 387-3449 • (904) 381-7560
 E-mail: fans@coolair.com
 Internet: www.coolair.com

Abbreviations for Accessories

- DS – Safety disconnect switch (specify voltage)
- PFC1 – Surface mount prefabricated roof curb
- WHG – Safety guard
- EPX – 6 mil epoxy finish
- HDG – Hot dip galvanized
- CA – Cork-impregnated asphalt
- ML – Magnetic latches
- OG – Outlet guard
- RS – Reversing switch (for single phase motors only)



Dimensions

Dimension "A" is the overall depth of the plenum.
 Dimension "B" is the width of the plenum (square).
 Dimension "C" is the diameter of the circular wind shroud.
 Dimension "D" is the overall height above the curb.
 Dimension "E" is the depth of the curb cap flange.
 Dimension "F" is the overall length and width of the damper including flange.

Standard Fan Features

- Reversible airflow – exhaust or recirculation
- All weather performance
- Unique fan/damper plenum
- All-welded steel curb cap
- All-welded steel fan panel
- Counter-balanced dampers
- Four high strength cast aluminum airfoil propeller blades
- Removable plenum flanges – for ease of installation
- Access panel
- UL Listed for Standard 705 (most models)

Fan Size	DIMENSIONS IN INCHES					
	A	B	C	D	E	F
24	65 ¹ / ₂	33	32	29 ⁵ / ₈	2	25 ¹ / ₂
30	71 ⁵ / ₈	39	38	34 ¹ / ₂	2	31 ³ / ₄
36	77 ⁵ / ₈	45	44	34 ¹ / ₂	2	37 ³ / ₄
42	83 ⁵ / ₈	51	50	39 ³ / ₈	2	43 ³ / ₄
48	92 ⁵ / ₈	57	56	39 ³ / ₈	2	49 ³ / ₄
54	98 ⁵ / ₈	63	62	43 ³ / ₈	3	55 ³ / ₄
60	104 ⁵ / ₈	70	68	46 ³ / ₈	3	61 ³ / ₄

Note: Roof curb dimensions are critical. Inside curb minimum – "B" dimension plus 1 inch. Outside curb maximum – "B" dimension plus 4 inches.

Specifications

FAN NO.	QTY.	FAN DATA						MOTOR DATA					ENCLOSURE	ACCESSORIES AND REMARKS
		MODEL NO.	CFM	SP	RPM	SONES	HP	RPM	VOLTAGE	PH	HZ			

PROJECT _____ ENGINEER _____ SUBMITTED BY _____ DATE _____

LOCATION _____ CONTRACTOR _____ APPROVED BY _____ DATE _____