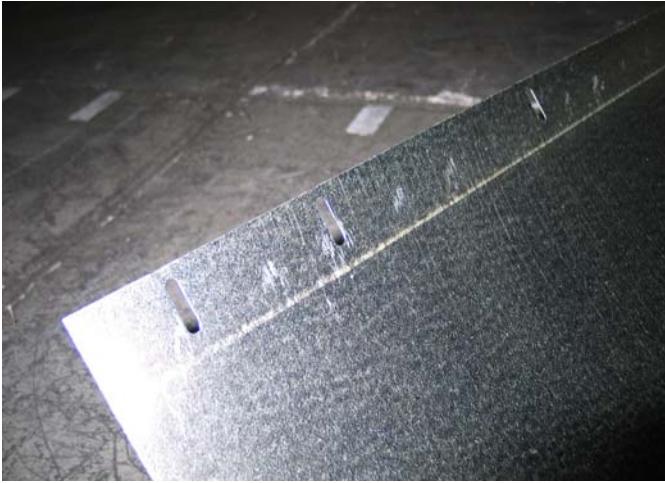


## 54G-70 Cone Installation Instructions



1) The cone consists of four quarter panels. One of the four panels has slots to allow for adjustment. When assembled, the seam with the slots will go to the bottom of the fan.



2) Assemble the four cone quarters, large end down, with the 1/4" hardware. For the slotted seam, start with the hardware centered in the slot. A flat washer is required to cover the slots in the cone.



3) Attach the four cone mounting angles to the cone, down in the slot.



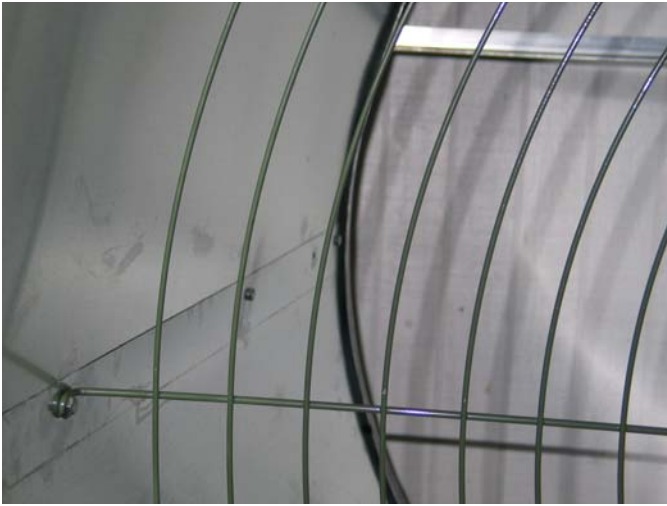
4) Flip the cone over, and mount the cone guard in the cone. Then, flip the cone back over. The seam with the slots will go to the bottom of the fan.



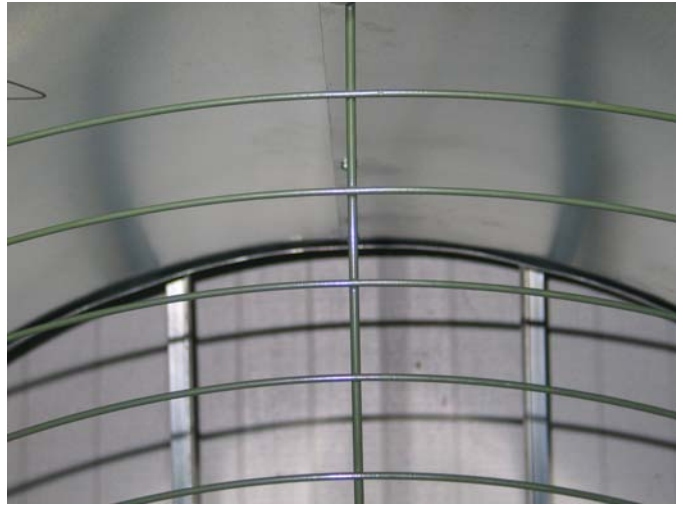
5) Lift the cone and hang it over the fan panel orifice. Put the 1/4" bolts through the top two cone angles.



6) Slip the cone to slip over the rest of the orifice. Put the 1/4" bolts through the bottom two cone angles. Secure all eight bolts.



7) Check that the cone is snug on the sides of the fan panel orifice. If necessary, adjust at the slots for a tighter fit.



8) Check that the cone is snug on the top and bottom of the fan panel orifice. If necessary, adjust at the slots for a tighter fit.



### Completed Cone Installation



### FARM PRODUCTS DIVISION

MEMBER OF AMCA  
AMERICAN COOLAIR CORPORATION  
P.O. BOX 2300  
JACKSONVILLE, FLORIDA 32203  
PHONE (904) 389-3646 FAX (904) 387-3449  
E-MAIL - agfans@coolair.com