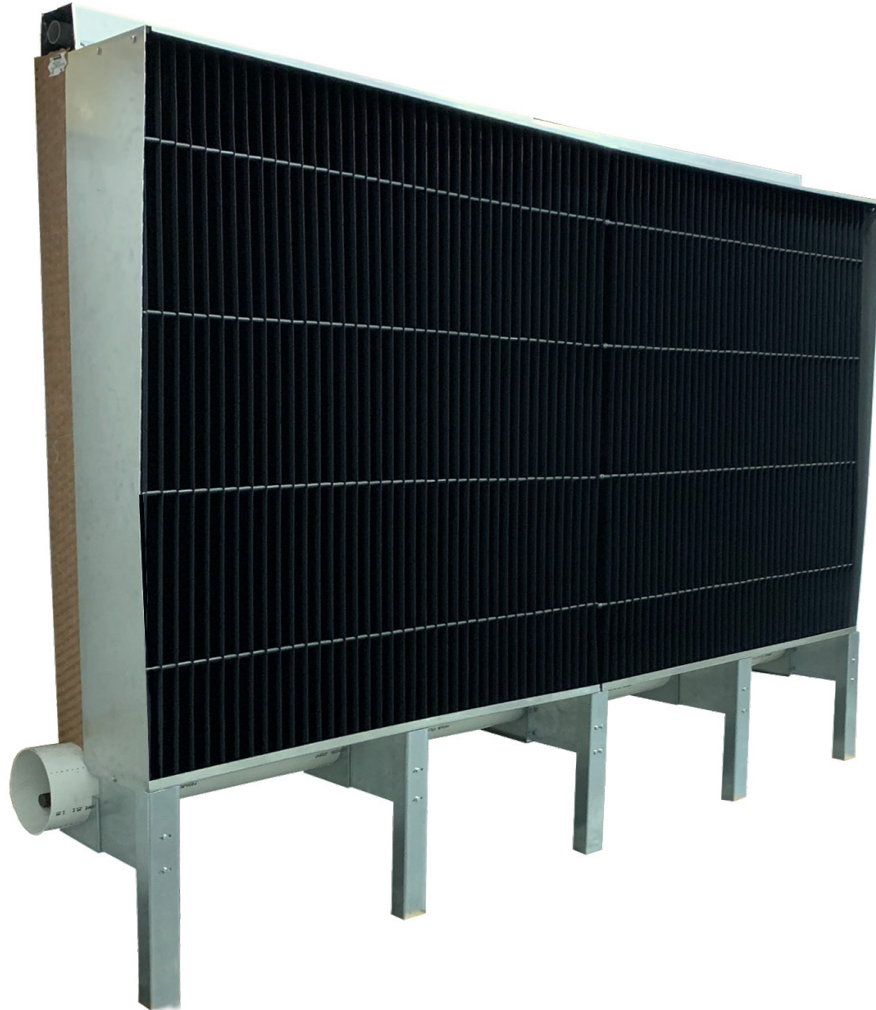


BROWN OUT KIT
INSTALLATION INSTRUCTIONS
FOR OPEN TOP AND CLOSED TOP
EVAPORATIVE COOLING SYSTEMS



American Coolair's Brown Out Kit for evaporative cooling systems provides substantial light control for greenhouses or poultry buildings and can be easily installed on the inside or outside of your building.



P.O. Box 2300 | Jacksonville, FL 32203
Ph 904-389-3646
Fax 904-387-3449 | 904-381-7560
www.coolair.com

 /AmericanCoolair

 /AmericanCoolair

 /Company/American-Coolair-Corp

ASSEMBLY & INSTALLATION INSTRUCTIONS

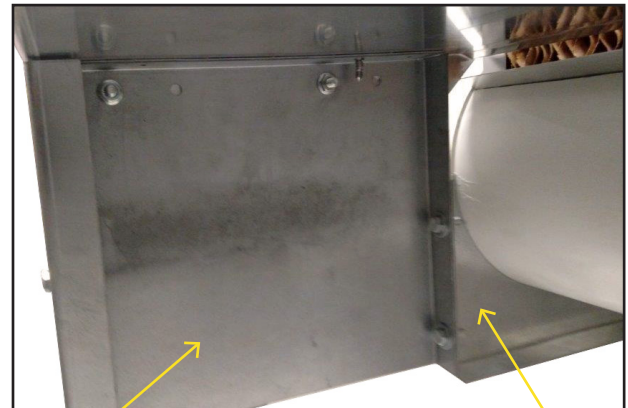
1. Assemble your American Coolair Evaporative Cooling System as described in the PVC Open Top or Closed Top Installation and Operation Instructions (Form No. 940-50) and as shown in Picture 1.



Picture 1

2. Using the 1/4" self-drilling screws provided, add the additional pipe support brackets in between the 5' spaced pipe support brackets installed with the standard PVC system, as shown in Picture 2. This will result in pipe support brackets on 2.5' centers.

If retrofitting an older, existing evaporative cooling system, mount the deck support bracket flush with the pipe support bracket and use a clamp to hold the two pieces together. Attach the two brackets together as shown using two self drilling screws.



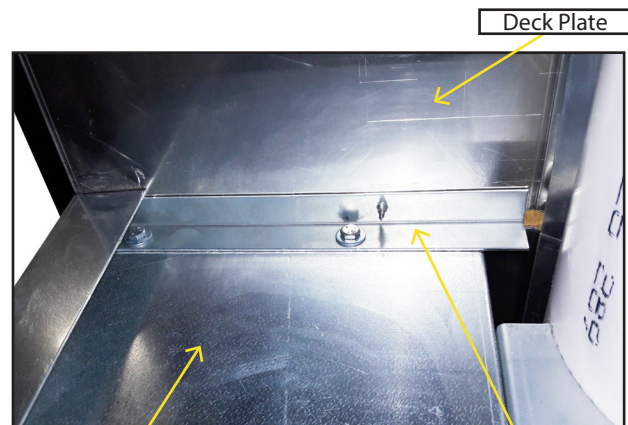
Picture 2

Brown Out Deck Support

Pipe Support

3. Using the .25" diameter wiz nuts and bolts provided, add the brown out deck support to each pipe support bracket as shown in Picture 2. These will be installed every 2.5' on the pipe support brackets.

4. Starting at the left end of the system and using the same hardware from Step 2, bolt the brown out angle brackets every 5' as shown in Picture 3. This ensures that the deck plate will be properly supported.



Picture 3

Brown Out Deck Support

Support Angle

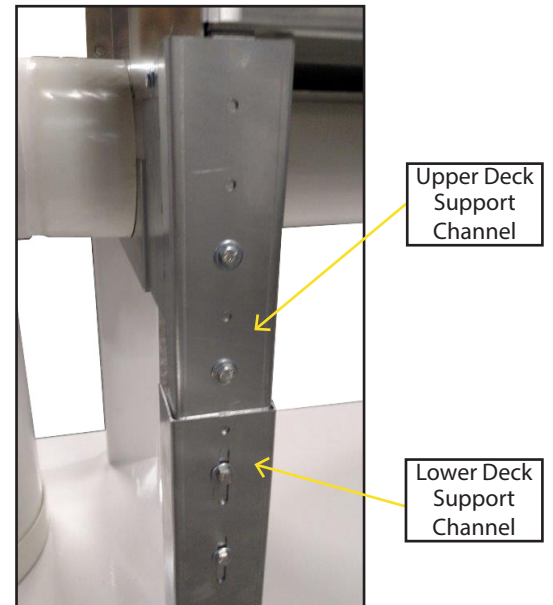
5. Ensure that all deck plates are level. Bolt the adjustable upper and lower deck support channels to the front of the deck support bracket as shown in Picture 4, ensuring that the deck plate remains level.

6. Adjust the upper channel support upwards until contact is made with the deck plate as shown in Picture 4. This supports the weight of the brown out pad.

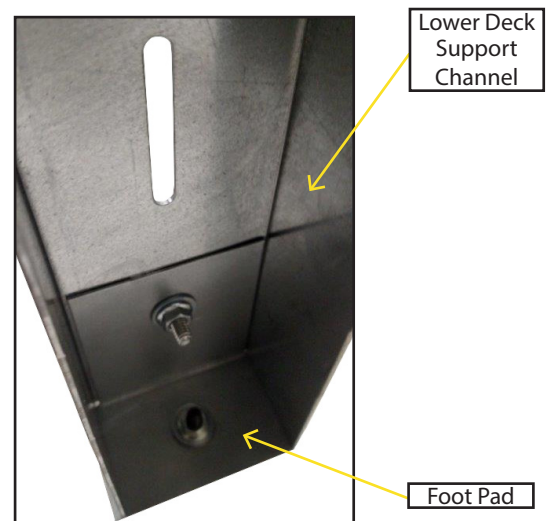
7. Install the foot pad on each lower leg as shown in Picture 5.

8. Using the self-drilling stainless steel screws provided, attach the deck plate to the deck plate support bracket and support angle as shown in Picture 6.

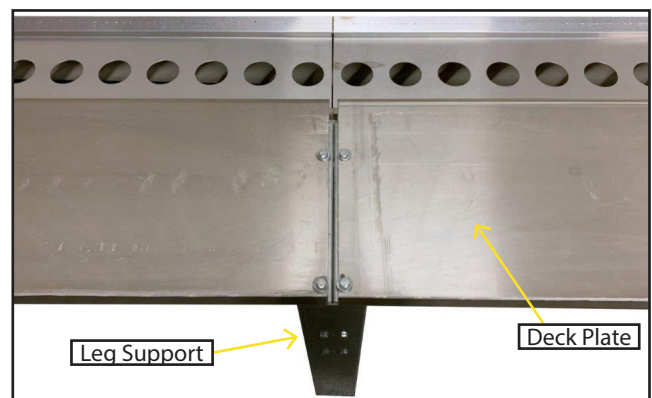
9. Assemble each brown out pad in 5' sections. See Dandy Instruction Manual for this assembly step.



Picture 4

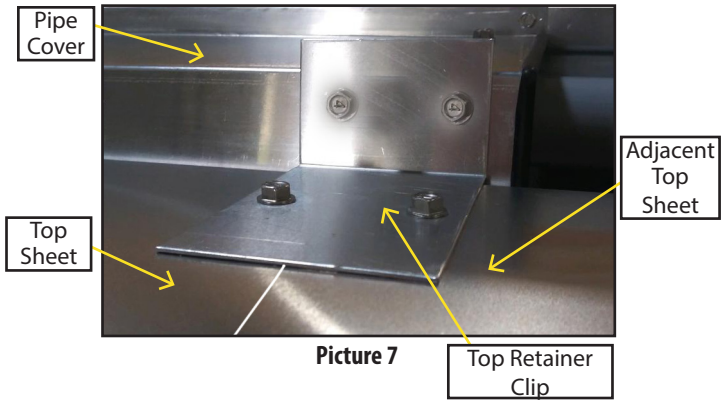


Picture 5



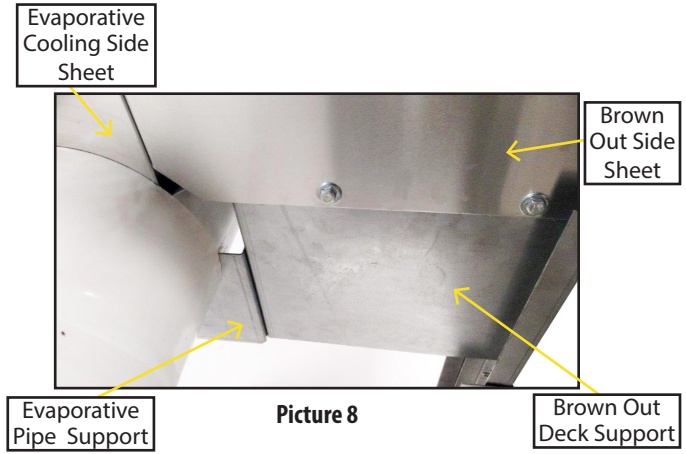
Picture 6

10. Place each Dandy brown out pad section on the deck plate with the bottom edge of the brown out pad touching the front edge of the aluminum deck plate flange.



Picture 7

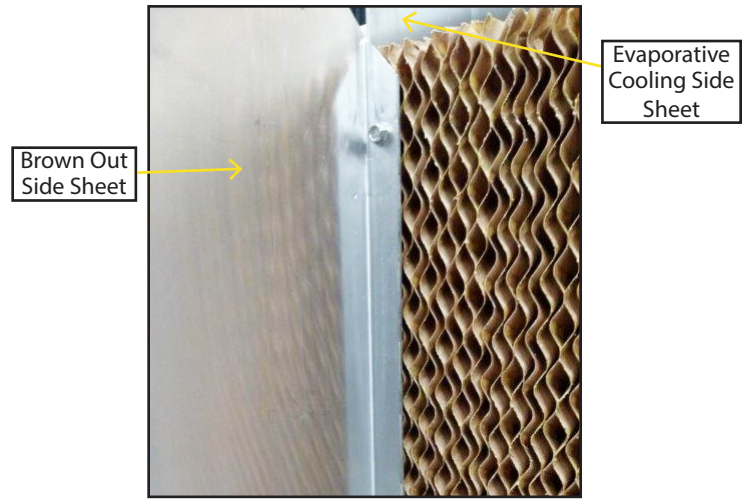
11. At each top sheet seam, attach the top sheet to the front pipe cover using the top retainer clip and self drilling screws as shown in Picture 7.



Picture 8

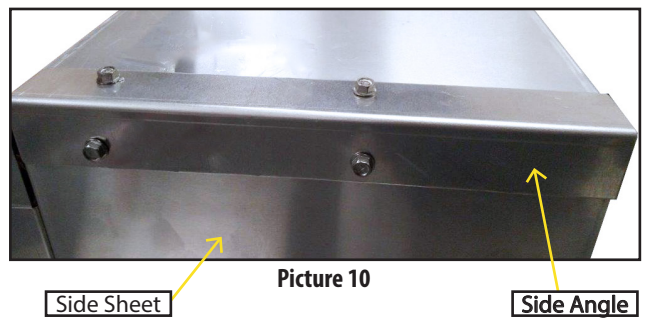
12. Bolt the two side sheets to the deck support bracket at the end of the system as seen in Picture 8.

13. Using 3 self-drilling screws, attach the brown out side sheet to the evaporative cooling pad side sheet as shown in Picture 9.



Picture 9

14. Place the side sheet support angles on top of the side sheet and attach them to the side sheet and to the top sheet at each end of the system with self-drilling screws as shown in Picture 10.



Picture 10